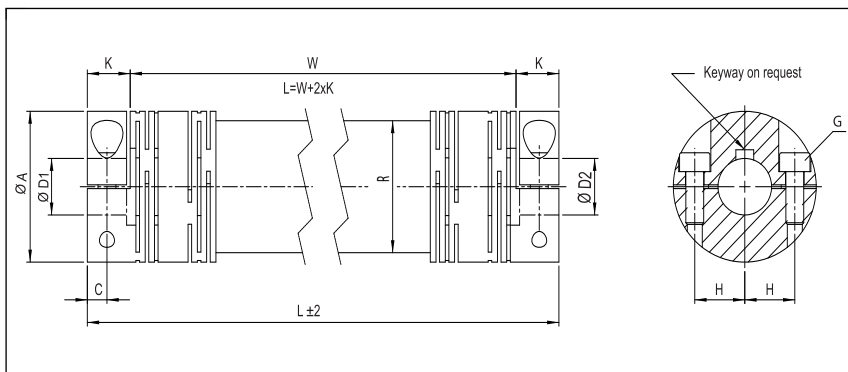
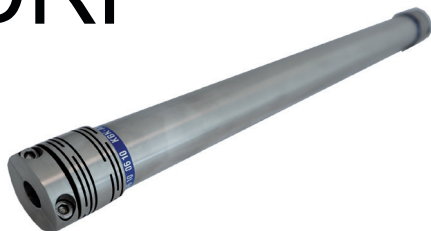


Line Shaft
with Slit Coupling

special material

stainless steel version
optional
laserwelded

DRF

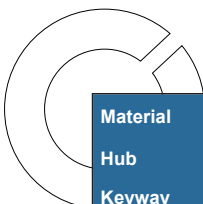


Order Code

DRF / 40 - 1250 - 10 - 16 - VA

Type / Size Length $\varnothing D1$ (H7) $\varnothing D2$ (H7) Material

Size	Torque TKN (Nm) AL	Torque TKN (Nm) VA	Dimensions (mm)							Screw (ISO4762) TA (Nm)	R	Technical Data			
			L		$\varnothing A$	D1/D2	H	C	K			Spring Stiffness AL	Spring Stiffness VA		
			min.	max.									Outer \varnothing	Bore Size (H7) min-max	torsional CT (Nm/rad) AL
25	7	16	65	3000	25	6-12	8.5	4	8.5	M3x10 1.5	25	733	550	1558	1520
30	10	25	85	3000	30	6-14	10.5	5.5	12	M4x10 3.4	30	868	500	2530	3250
40	19	36	105	3000	40	6-19	14	5.5	12	M5x14 7	35	3767	770	11008	5352
50	35	73	135	3000	50	10-26	17	9.5	20.5	M6x16 14	50	7196	6400	20995	19391
60	70	110	165	3000	60	10-30	22	12.5	26.5	M8x18 27	60	12750	11400	37165	34544
70	130	190	195	3000	70	15-35	25	12.5	27	M8x25 27	60	66768	11400	196024	34544
80	180	240	205	3000	80	20-40	29	12.5	27	M8x30 27	75	78189	23000	229524	69550



Material coupling: aluminium or stainless steel

Hub bore tolerance: H7

Keyway optional acc. DIN 6885

Longer versions up to 6m on request!
Information about permissible misalignments and maximum speeds are available in our assembly - instructions.

Special material on request.